

Mean To Me

Medium Swing

Music by Fred E. Ahlert
Lyric by Roy Turk

A1



Mean to me, — Why must you be mean to — me? Gee, ho - ney, it



seems to me — you love to see — me cry - in'. I don't know why.

A2



I stay home — each night — when you say you'll phone, You don't — and I'm



left a - lone, Sing - in' the blues and sigh - in'. You treat me

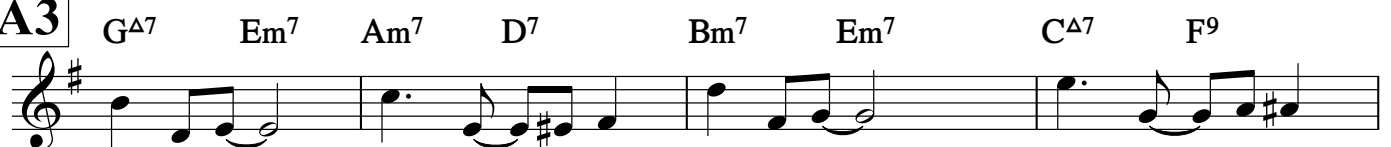


cold - ly each day — in the year; — You al - ways



scold me when - ev - er some - bod - y is near, dear.

A3



It must be — great fun — to be mean to me, You should - n't for



can't you see — what you mean to me. —